

**NEW YORK STATE THRUWAY AUTHORITY
DEPARTMENT OF ENGINEERING**

**ALBANY, NY
JUNE 9, 2026**

**AMENDMENT NO. 3
TO**

**CONTRACT TANY 26-17B
D215020
REPLACEMENT OF THE PINE HILL ROAD
BRIDGE OVER I-87 AT MP 47.58,
REHABILITATION OF I-87 BRIDGE OVER
SMITH CLOVE ROAD AT MP 47.04,
AND RESURFACING AND SAFETY IMPROVEMENTS
ON I-87 BETWEEN MP 46 AND MP 48
IN THE NEW YORK DIVISION
OF THE NEW YORK STATE THRUWAY
IN ORANGE COUNTY**

**IN THE LETTING OF
JUNE 17, 2026**

NOTE: This amendment shall be attached to and become a part of the Proposal for Contract TANY 26-17B.

NOTICE

For Electronic Bidders, the Project's amended EBSX file will automatically account for any necessary item changes (deletions, changes in quantities, or additions) that this Amendment may describe as being required regarding the project's estimated cost. Instructions to make physical changes to the Project Proposal's bid sheets are intended for "paper" Bidders who choose to submit bids via paper.

Questions and Answers for this project are available from the Authority's website, specifically at: https://content3.thruway.ny.gov/netdata/contractors/documents/d215020_tany26-17b_questions-and-answers-06-09-2026.pdf. This document may be updated periodically without formal issuance of an Amendment. Prospective bidders are advised to revisit this link weekly and before proposals are due, for any possible additional questions and answers information. Please also note that a previous response (A10) to Question 10 (Q10) as shown on page 3 has been updated to clarify the intent of the original response as previously provided.

PROPOSAL**1. DELETE** the following Items:

<u>Contract Proposal Page</u>	<u>Item No.</u>	<u>Description</u>	<u>Unit</u>	<u>Estimated Quantity</u>
205	206.03	Conduit Excavation and Backfill Including Surface Restoration	LF	70
205	206.0312 25	Conduit Installation on Above Grade Structure	LF	180
210	564.510001	Structural Steel	LB	1,016
222	680.5109 25	Pullbox - B	Each	1
222	680.520106	Conduit, Metal Steel, Zinc Coated, 2"	LF	145
222	680.520406	Traffic Signal Conduit, PVC Coated Galvanized Steel, 2"	LF	185
222	680.7751 25	Transmit Coaxial Cable - Type A	LF	274
222	680.7752 25	Transmit Coaxial Cable - Type B	LF	406
222	683.3011 25	Transmit Antenna	Each	4
222	683.5000 25	NEMA 4X Stainless Steel Enclosure	Each	1

The "paper" Bidder shall **CROSS OUT** and not enter a bid for these items in the Contract Proposal. If the Bidder fails to make these changes, the Authority will do so and adjust the TOTAL BID, accordingly.

DELETE all other references to the above items in the Contract Plans and Contract Proposal, including the Special Specifications as shown on pages 25, 73 through 79, and 81 through 86.

2. CHANGE the estimated quantity for the following Item:

<u>Contract Proposal Page</u>	<u>Item No.</u>	<u>Description</u>	<u>Unit</u>	<u>Initial Estimated Quantity</u>	<u>Revised Estimated Quantity</u>
210	559.02	Protective Sealing of New Structural Concrete	SF	3,802	5,798

The "paper" Bidder shall **CROSS OUT** the estimated quantity shown for these items in the Contract Proposal, **WRITE IN** the revised estimated quantity, and submit its bid based on the noted changes. If the Bidder fails to make these changes, the Authority will do so and adjust the BID AMOUNT for the items and TOTAL BID, accordingly.

3. **ADD** the following Item:

<u>Contract Proposal Page</u>	<u>Item No.</u>	<u>Description</u>	<u>Unit</u>	<u>Estimated Quantity</u>
223B-A3	619.2402	Nighttime Operations (Each Location)	LS	1

The “paper” Bidder must **RETURN THE ATTACHED PAGE 223A-A3** with its bid for this Contract.

PLANS

4. **DELETE** Drawing Number MD-02, Sheet 22 of 180 in its entirety. The ITS Elements associated with the details as previously shown on this drawing have been removed from the contract. It will not be superseded with a replacement drawing.
5. **DELETE** Drawing Number MD-03, Sheet 23 of 180 in its entirety. The ITS Elements associated with the details as previously shown on this drawing have been removed from the contract. It will not be superseded with a replacement drawing.
6. **DELETE** the Index to Drawings 6 through 110, Sheet 6 of 180, and **SUBSTITUTE** with the attached Index to Drawings 6 through 110, Sheet 6A3 of 180. The drawing has been revised to cross out previous entries for sheet numbers 22, 23, 35 and 88. Refer to additional details below.
7. **DELETE** Drawing Number ITS-01, Sheet 35 of 180 in its entirety. The ITS Elements associated with the details as previously shown on this drawing have been removed from the contract. It will not be superseded with a replacement drawing.
8. **DELETE** Drawing Number ST-04, Sheet 44 of 180, and **SUBSTITUTE** with the attached Drawing Number ST-04, Sheet 44A3 of 180. Previous ITS conduit callout has been removed, and the callouts to the pay limits for Protective Sealing of Structural Concrete have been updated in the Proposed Typical Section detail.
9. **DELETE** Drawing Number ST-25, Sheet 65 of 180, and **SUBSTITUTE** with the attached Drawing Number ST-25, Sheet 65A3 of 180. Note 5 has been removed.
10. **DELETE** Drawing Number ST-43, Sheet 83 of 180, and **SUBSTITUTE** with the attached Drawing Number ST-43, Sheet 83A3 of 180. The callouts to the pay limits for Protective Sealing of Structural Concrete have been updated in the Transverse Section detail.
11. **DELETE** Drawing Number ST-44, Sheet 84 of 180, and **SUBSTITUTE** with the attached Drawing Number ST-44, Sheet 84A3 of 180. The previous callout of the ITS Antenna Support has been removed from the Framing Plan detail.
12. **DELETE** Drawing Number ST-48, Sheet 88 of 180 in its entirety. The ITS Elements associated with the details as previously shown on this drawing have been removed from the contract. It will not be superseded with a replacement drawing.

13. **DELETE** Drawing Number ST-51, Sheet 91 of 180, and **SUBSTITUTE** with the attached Drawing Number ST-51, Sheet 91A3 of 180. The quantities for the Protective Sealing of Structural Concrete, to be paid for under Item 559.02, have been updated in the Superstructure Slab Table.

14. **DELETE** Drawing Number GN-1, Sheet 139A2 of 180, and **SUBSTITUTE** with the attached Drawing Number GN-1, Sheet 139A3 of 180. Note 37 has been revised to reflect the following: removed reference to Item 582.0061, which has been removed from the contract, clarified the locations where Item 582.0051 will be used for payment of concrete repairs, and specified that any reinforcement replaced as part of the repair procedures will be paid for under Item 556.0202.

The Bidder **MUST** complete Page **238** of the Proposal acknowledging receipt of this amendment. If the Bidder fails to complete the "Amendment Acknowledgement" sheet, his bid could be declared informal thereby delaying award of the contract.

PLEASE BE GOVERNED ACCORDINGLY WHEN SUBMITTING BIDS.

Brent E. Howard, P.E.
Chief Engineer



**Thruway
Authority**

06/09/2026 8:53:42 AM

AASHTOWare Project™ Version 5.02.04 Revision 045

Proposal Schedule of Items

Proposal ID: D215020

Project(s): N72123

Contractor: _____

SECTION:

Alt Set ID:

Alt Mbr ID:

Proposal Line Number	Item ID Description	Approximate Quantity and Units	Unit Price		Bid Amount	
			Dollars	Cents	Dollars	Cents
1100	619.2402 NIGHTTIME OPERATIONS (EACH LOCATION)	LUMP SUM	LUMP SUM		_____	_____
	Section:		Total:		_____	_____



**NEW YORK DIVISION
PLANS FOR
REPLACEMENT
OF THE
PINE HILL ROAD BRIDGE
AT
I-87 MILE POST 47.58
IN
ORANGE COUNTY**

TANY 26-17B D215020

105 SHEETS BIN 5514280

DRAWINGS 6 TO 110

Sheet No.	Drawing No.	Drawing Title
7	TYP-01	TYPICAL SECTION
8	TCN-01	TRAFFIC CONTROL NOTES
9	TC-01	WORK ZONE TRAFFIC CONTROL (MAINLINE) (1 OF 2)
10	TC-02	WORK ZONE TRAFFIC CONTROL (MAINLINE) (2 OF 2)
11	TC-03	WORK ZONE TRAFFIC CONTROL STAGE 1 - (PINE HILL ROAD) (1 OF 2)
12	TC-04	WORK ZONE TRAFFIC CONTROL STAGE 1 - (PINE HILL ROAD) (2 OF 2)
13	TC-05	WORK ZONE TRAFFIC CONTROL STAGE 2 - (PINE HILL ROAD) (1 OF 2)
14	TC-06	WORK ZONE TRAFFIC CONTROL STAGE 2 - (PINE HILL ROAD) (2 OF 2)
15	TC-07	WZTC TYPICAL SECTIONS (MAINLINE)
16	TC-08	WZTC TYPICAL SECTIONS (PINE HILL ROAD)
17	TCSGD-01	WORK ZONE SIGN TABLE
18	BLT-01	BASELINE TIES AND BENCHMARKS
19	MI-01	MAINTENANCE JURISDICTION
20	MST-01	MISCELLANEOUS TABLES
21	MSD-01	MISCELLANEOUS DETAILS (1 OF 3)
22	MSD-02	MISCELLANEOUS DETAILS (2 OF 3)
23	MSD-03	MISCELLANEOUS DETAILS (3 OF 3)
24	ESS-01	EARTHWORK SUMMARY SHEET
25	ESC-01	GRADING AND EROSION & SEDIMENT CONTROL PLAN (1 OF 2)
26	ESC-02	GRADING AND EROSION & SEDIMENT CONTROL PLAN (2 OF 2)
27	ECD-01	EROSION & SEDIMENT CONTROL DETAILS (1 OF 2)
28	ECD-02	EROSION & SEDIMENT CONTROL DETAILS (2 OF 2)
29	GNP-01	GENERAL PLAN (1 OF 2)
30	GNP-02	GENERAL PLAN (2 OF 2)
31	PRO-01	PROFILE
32	PMP-01	SIGNS AND PAVEMENT MARKING PLAN (1 OF 2)
33	PMP-02	SIGNS AND PAVEMENT MARKING PLAN (2 OF 2)
34	SGD-01	SIGN TEXT DATA AND SIGNS TABLES
35	ITS-01	ITS PLAN
36	FM DTL-1	SANITARY SEWER FORCE MAIN INSTALLATION DETAILS
37	FM DTL-2	SANITARY SEWER FORCE MAIN BRIDGE MOUNTING DETAILS
38	SR-01	PINE HILL ROAD SANITARY FORCE MAIN REPLACEMENT SITE PLAN (1 OF 2)
39	SR-02	PINE HILL ROAD SANITARY FORCE MAIN REPLACEMENT SITE PLAN (2 OF 2)
40	SRP-01	PINE HILL ROAD SANITARY FORCE MAIN REPLACEMENT PROFILE
41	ST-01	EXISTING PLAN AND ELEVATION
42	ST-02	PROPOSED PLAN AND ELEVATION
43	ST-03	TYPICAL APPROACH SECTION
44	ST-04	TYPICAL BRIDGE SECTION
45	ST-05	STAGE CONSTRUCTION SECTIONS (1 OF 2)
46	ST-06	STAGE CONSTRUCTION SECTIONS (2 OF 2)
47	ST-07	DECK CONDITION PLAN
48	ST-08	BRIDGE PROFILE
49	ST-09	GENERAL NOTES
50	ST-10	BORING LOCATION PLAN
51	ST-11	GENERAL SUBSURFACE PROFILE
52	ST-12	EXCAVATION AND EMBANKMENT PLAN - BEGIN ABUTMENT - STAGE 1
53	ST-13	EXCAVATION AND EMBANKMENT PLAN - BEGIN ABUTMENT - STAGE 2
54	ST-14	EXCAVATION AND EMBANKMENT PLAN - PROPOSED PIER - STAGE 1
55	ST-15	EXCAVATION AND EMBANKMENT PLAN - PROPOSED PIER - STAGE 2
56	ST-16	EXCAVATION AND EMBANKMENT PLAN - END ABUTMENT - STAGE 1
57	ST-17	EXCAVATION AND EMBANKMENT PLAN - END ABUTMENT - STAGE 2
58	ST-18	EXCAVATION AND EMBANKMENT SECTIONS (1 OF 4)
59	ST-19	EXCAVATION AND EMBANKMENT SECTIONS (2 OF 4)
60	ST-20	EXCAVATION AND EMBANKMENT SECTIONS (3 OF 4)
61	ST-21	EXCAVATION AND EMBANKMENT SECTIONS (4 OF 4)

Sheet No.	Drawing No.	Drawing Title
62	ST-22	GRSS WALL DETAILS (1 OF 2)
63	ST-23	GRSS WALL DETAILS (2 OF 2)
64	ST-24	H-PILE AND LAGGING WALL DETAILS (1 OF 2)
65	ST-25	H-PILE AND LAGGING WALL DETAILS (2 OF 2)
66	ST-26	EXISTING BEGIN ABUTMENT REMOVAL PLAN AND ELEVATION
67	ST-27	EXISTING END ABUTMENT REMOVAL PLAN AND ELEVATION
68	ST-28	BEGIN ABUTMENT PLAN AND ELEVATION
69	ST-29	BEGIN ABUTMENT REINFORCEMENT PLAN
70	ST-30	BEGIN ABUTMENT REINFORCEMENT SECTIONS STAGE 1
71	ST-31	BEGIN ABUTMENT REINFORCEMENT SECTIONS STAGE 2
72	ST-32	PIER 1 PLAN & ELEVATION
73	ST-33	PIER 1 REINFORCEMENT PLAN
74	ST-34	END ABUTMENT PLAN AND ELEVATION
75	ST-35	END ABUTMENT REINFORCEMENT PLAN
76	ST-36	END ABUTMENT REINFORCEMENT SECTIONS STAGE 1
77	ST-37	END ABUTMENT REINFORCEMENT SECTIONS STAGE 2
78	ST-38	MISCELLANEOUS CONCRETE DETAILS (1 OF 2)
79	ST-39	MISCELLANEOUS CONCRETE DETAILS (2 OF 2)
80	ST-40	BEARING DETAILS (1 OF 3)
81	ST-41	BEARING DETAILS (2 OF 3)
82	ST-42	BEARING DETAILS (3 OF 3)
83	ST-43	TRANSVERSE SECTION
84	ST-44	FRAMING PLAN
85	ST-45	GIRDER ELEVATION
86	ST-46	STEEL DETAILS (1 OF 3)
87	ST-47	STEEL DETAILS (2 OF 3)
88	ST-48	STEEL DETAILS (3 OF 3)
89	ST-49	TABLES AND CAMBER DIAGRAMS
90	ST-50	LAUNCH TABLE
91	ST-51	SLAB REINFORCEMENT DETAILS (1 OF 2)
92	ST-52	SLAB REINFORCEMENT DETAILS (2 OF 2)
93	ST-53	APPROACH SLAB DETAILS
94	ST-54	SLEEPER SLAB DETAILS
95	ST-55	CONCRETE BARRIER, TRANSITION RAILING, DRAINAGE LAYOUT
96	ST-56	APPROACH DRAINAGE DETAILS
97	ST-57	CONCRETE BARRIER REINFORCING PLANS
98	ST-58	SINGLE SLOPE CONCRETE BARRIER DETAILS
99	ST-59	BRIDGE TRANSITION RAILING DETAILS (1 OF 4)
100	ST-60	BRIDGE TRANSITION RAILING DETAILS (2 OF 4)
101	ST-61	BRIDGE TRANSITION RAILING DETAILS (3 OF 4)
102	ST-62	BRIDGE TRANSITION RAILING DETAILS (4 OF 4)
103	ST-63	PROTECTIVE SCREENING DETAILS
104	ST-64	BAR BENDING DIAGRAM
105	ST-65	BAR LIST (1 OF 6)
106	ST-66	BAR LIST (2 OF 6)
107	ST-67	BAR LIST (3 OF 6)
108	ST-68	BAR LIST (4 OF 6)
109	ST-69	BAR LIST (5 OF 6)
110	ST-70	BAR LIST (6 OF 6)

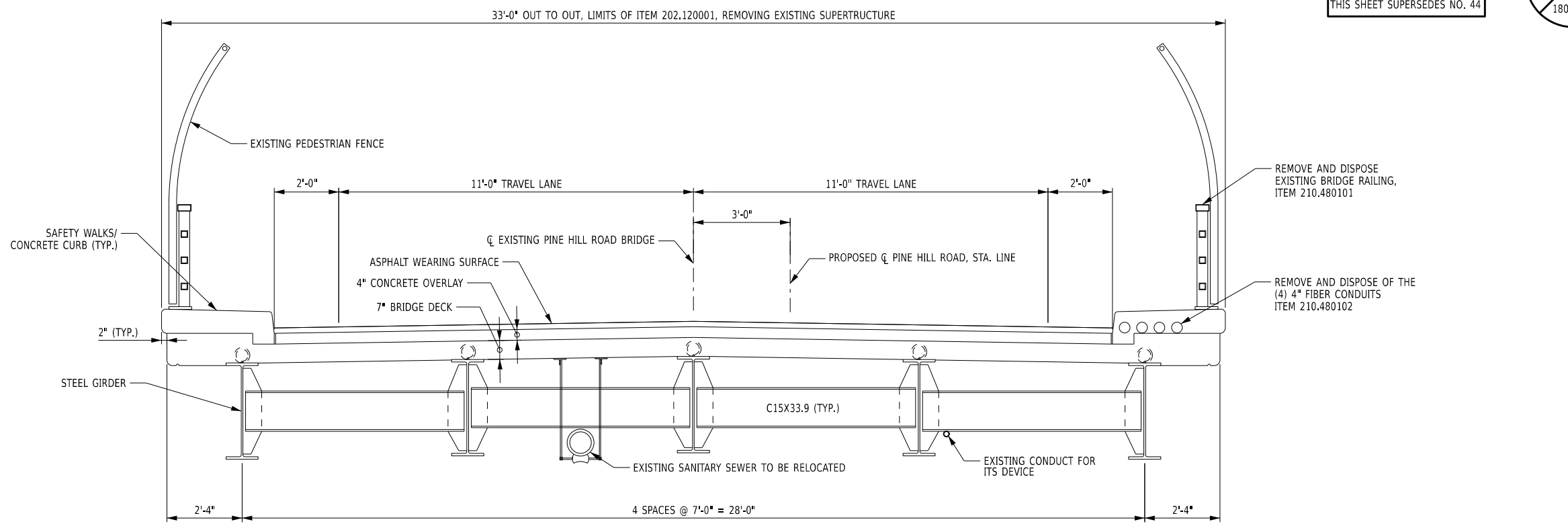
CHECKED BY: AJCE

DRAFTED BY: GWR

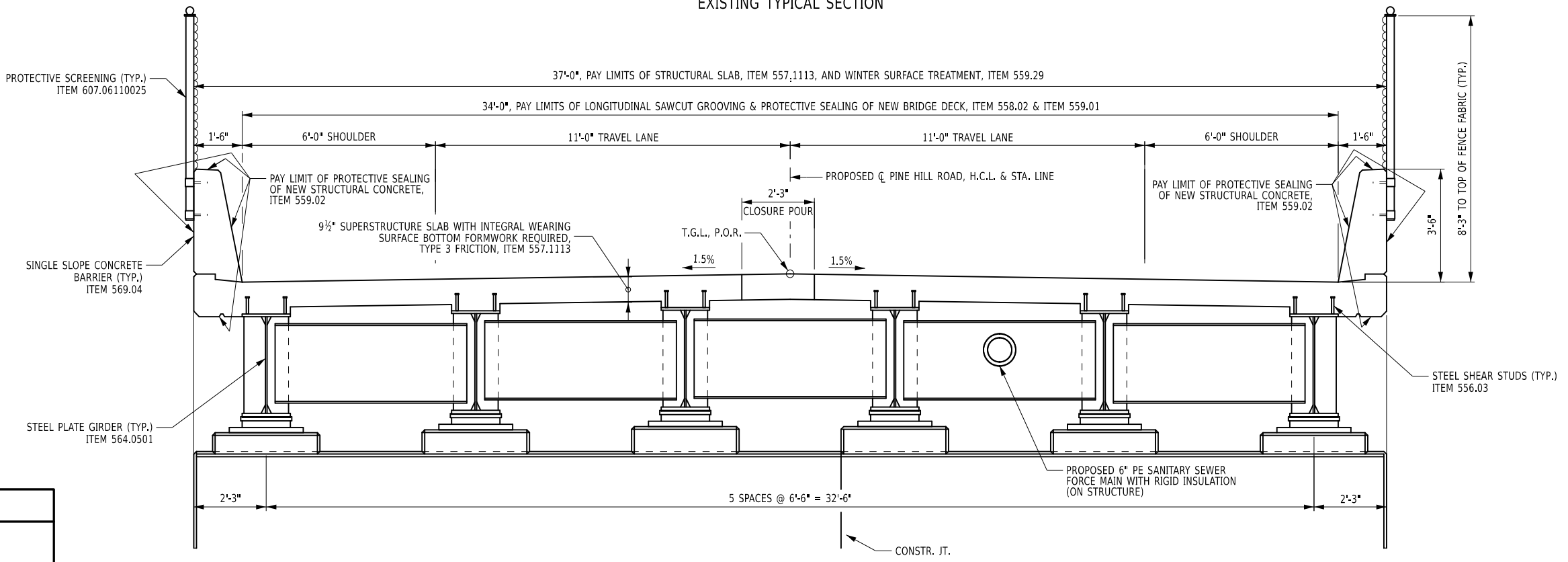
CHECKED BY: AJCE

DESIGNED BY: MR/VZ

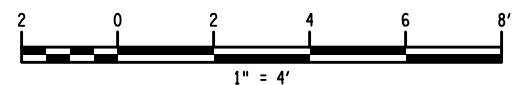
DESIGN SUPERVISOR: RWL



EXISTING TYPICAL SECTION



PROPOSED TYPICAL SECTION



ALTERED ON: AFFIXED ON: 01/19/2026

SIGNATURE: EDWIN K. TWISS JR., PE
STAMP:



IT IS A VIOLATION OF LAW FOR ANY PERSON, UNLESS THEY ARE ACTING UNDER THE DIRECTION OF A LICENSED PROFESSIONAL ENGINEER, ARCHITECT, LANDSCAPE ARCHITECT, OR LAND SURVEYOR, TO ALTER AN ITEM IN ANY WAY. IF AN ITEM BEARING THE STAMP OF A LICENSED PROFESSIONAL IS ALTERED, THE ALTERING ENGINEER, ARCHITECT, LANDSCAPE ARCHITECT, OR LAND SURVEYOR SHALL STAMP THE DOCUMENT AND INCLUDE THE NOTATION "ALTERED BY" FOLLOWED BY THEIR SIGNATURE, THE DATE OF SUCH ALTERATION, AND A SPECIFIC DESCRIPTION OF THE ALTERATION.

REVISIONS			
DATE	DESCRIPTION	BY	SYM.



TITLE OF PROJECT
REPLACEMENT OF THE PINE HILL ROAD BRIDGE AT I-87 MILEPOST 47.58

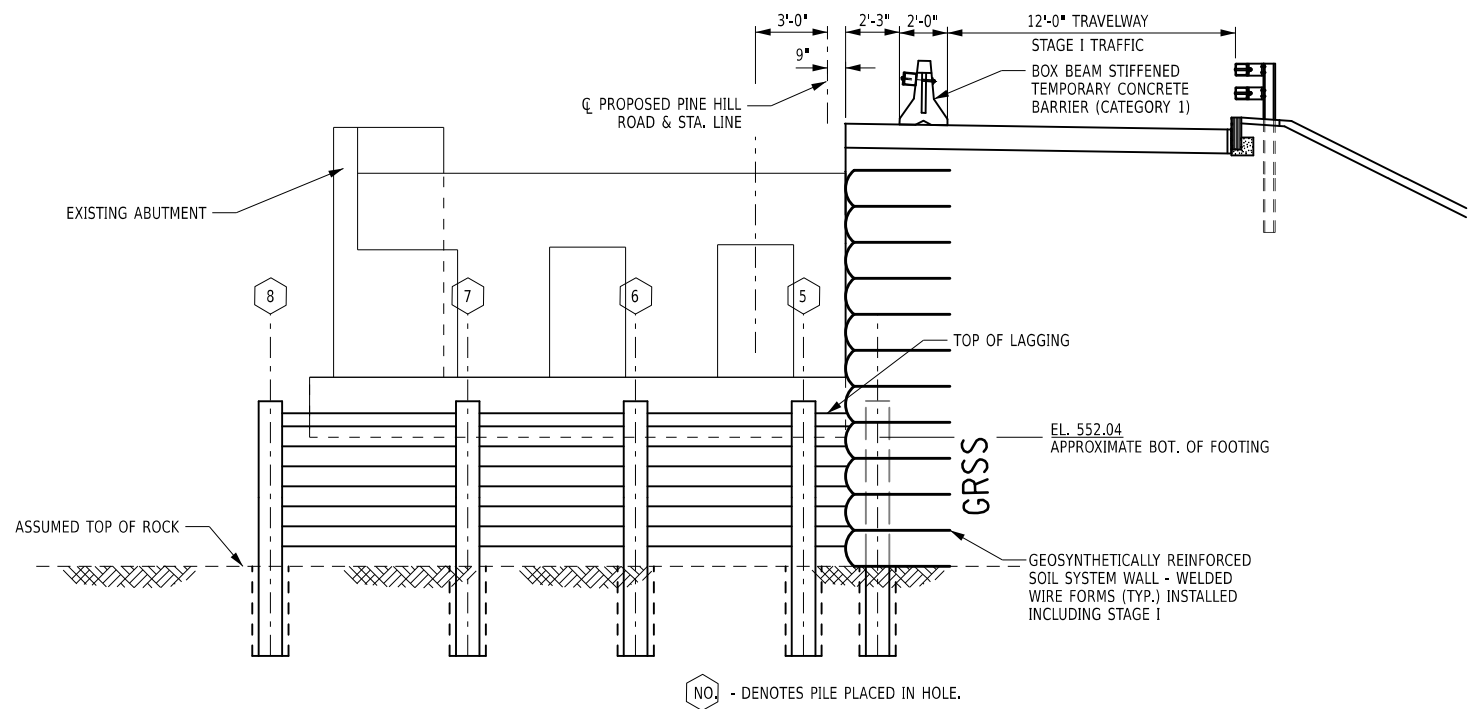
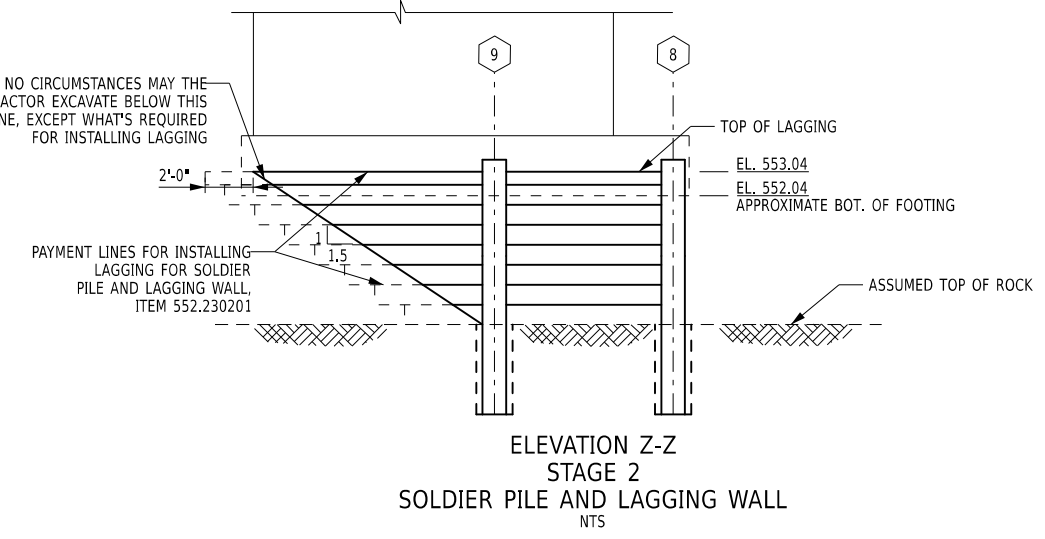
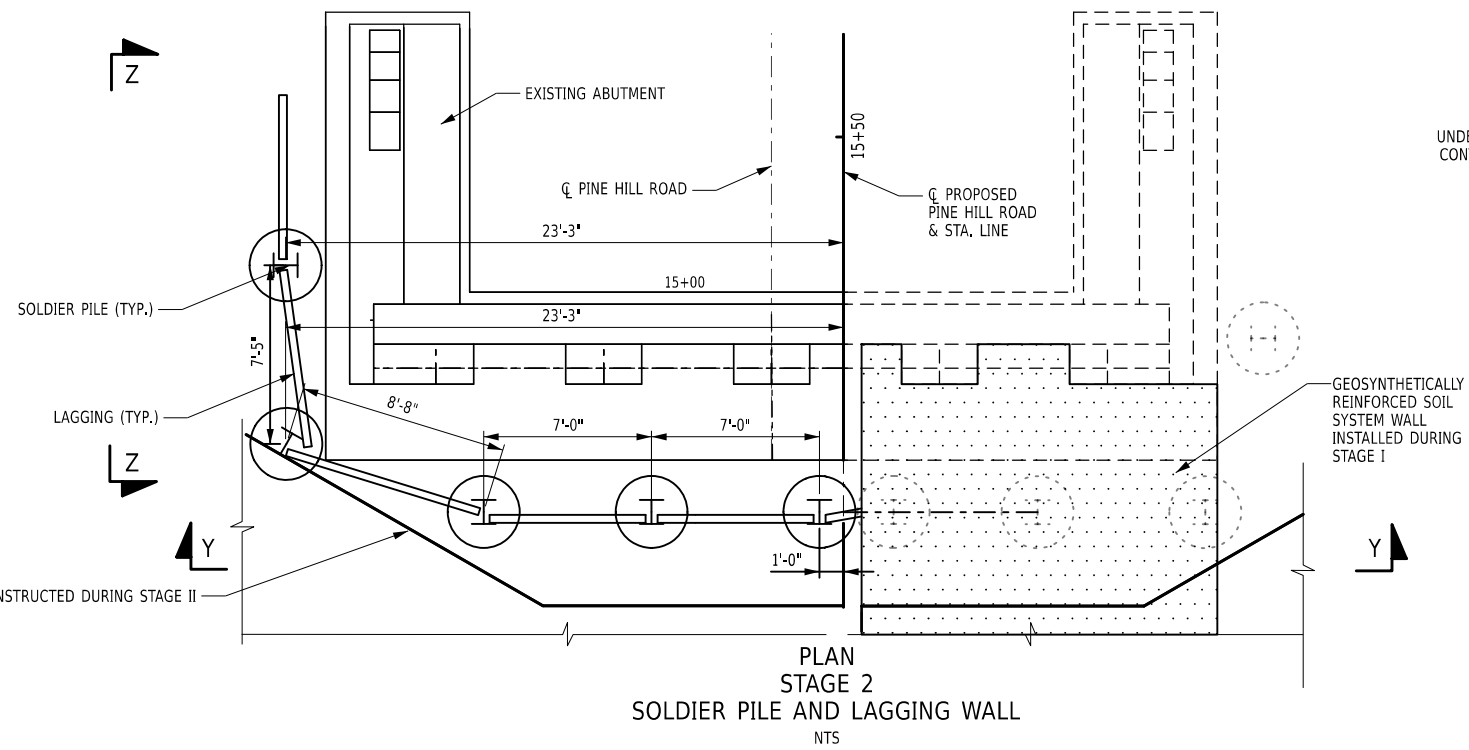
LOCATION OF PROJECT
VILLAGE OF WOODBURY
ORANGE COUNTY BIN 5514280

TITLE OF DRAWING
TYPICAL BRIDGE SECTIONS

CONTRACT NUMBER:
TANY 26-17B

DATE:
01/19/2026

DRAWING NUMBER:
ST-04



- NOTES:
1. IF CONTRACTOR ELECTS NOT TO LAY SLOPE BACK AND NOT USE THE EXCAVATION SUPPORT SYSTEM AS DETAILED. ANY EXCAVATION SUPPORT SYSTEM USED MUST BE DESIGNED FOR ANTICIPATED CONSTRUCTION LOADING.
 2. SOLDIER PILES SHALL BE INSTALLED IN ACCORDANCE WITH ITEM 552.2201 UNTREATED WOOD LAGGING FOR SOLDIER PILES AND LAGGING WALL.
 3. TIMBER LAGGING SHALL BE INSTALLED IN ACCORDANCE WITH ITEM 552.230201 UNTREATED LAGGING FOR SOLDIER PILES AND LAGGING WALL.
 4. ALL PILES SHALL BE A MINIMUM YIELD STRENGTH $F_y = 50$ KSI.

NO. - DENOTES PILE PLACED IN HOLE.

PILE NUMBER	STATION	OFFSET (IN FEET)	PILE TOP ELEVATIONS (IN FEET)	DEPTH OF EXCAVATION (IN FEET)	ASSUMED ROCK ELEVATION (IN FEET)	MINIMUM ROCK SOCKET (IN FEET)	MINIMUM PILE SECTION MODULUS (IN CUBIC INCHES)	RECOMMENDED SOLDIER PILE SECTION	MINIMUM DIA. OF HOLE (IN INCHES)	A5-BUILT PILE LENGTH (IN FEET)
5	15+34.36	1.00 (L)	553.54	10.54	541.50	6	172	HP 14X117	30	
6	15+34.36	8.00 (L)	553.54	10.54	541.50	6	172	HP 14X117	30	
7	15+34.36	15.00 (L)	553.54	10.54	541.50	6	172	HP 14X117	30	
8	15+37.20	23.25 (L)	553.54	10.54	541.50	6	172	HP 14X117	30	
9	15+44.67	23.08 (L)	553.54	10.54	541.50	6	172	HP 14X117	30	

ALTERED ON: _____ AFFIXED ON: 01/19/2026

SIGNATURE: _____ STAMP: _____

SIGNATURE: EDWIN K. TWISS JR., PE STAMP: _____

ELEVATION Y-Y STAGE 2 SOLDIER PILE AND LAGGING WALL NTS

IT IS A VIOLATION OF LAW FOR ANY PERSON, UNLESS THEY ARE ACTING UNDER THE DIRECTION OF A LICENSED PROFESSIONAL ENGINEER, ARCHITECT, LANDSCAPE ARCHITECT, OR LAND SURVEYOR, TO ALTER AN ITEM IN ANY WAY. IF AN ITEM BEARING THE STAMP OF A LICENSED PROFESSIONAL IS ALTERED, THE ALTERING ENGINEER, ARCHITECT, LANDSCAPE ARCHITECT, OR LAND SURVEYOR SHALL STAMP THE DOCUMENT AND INCLUDE THE NOTATION "ALTERED BY" FOLLOWED BY THEIR SIGNATURE, THE DATE OF SUCH ALTERATION, AND A SPECIFIC DESCRIPTION OF THE ALTERATION.

REVISIONS			
DATE	DESCRIPTION	BY	SYM.

NEW YORK STATE Thruway Authority

AECOM

TITLE OF PROJECT: REPLACEMENT OF THE PINE HILL ROAD BRIDGE AT I-87 MILEPOST 47.58
 LOCATION OF PROJECT: VILLAGE OF WOODBURY, ORANGE COUNTY BIN 5514280
 TITLE OF DRAWING: H-PILE AND LAGGING WALL DETAILS (2 OF 2)

CONTRACT NUMBER: TANY 26-17B
 DATE: 01/19/2026
 DRAWING NUMBER: ST-25

CHECKED BY: AJICE
 DRAFTED BY: GWR
 CHECKED BY: AJICE
 DESIGNED BY: MR/VZ
 DESIGN SUPERVISOR: RWL

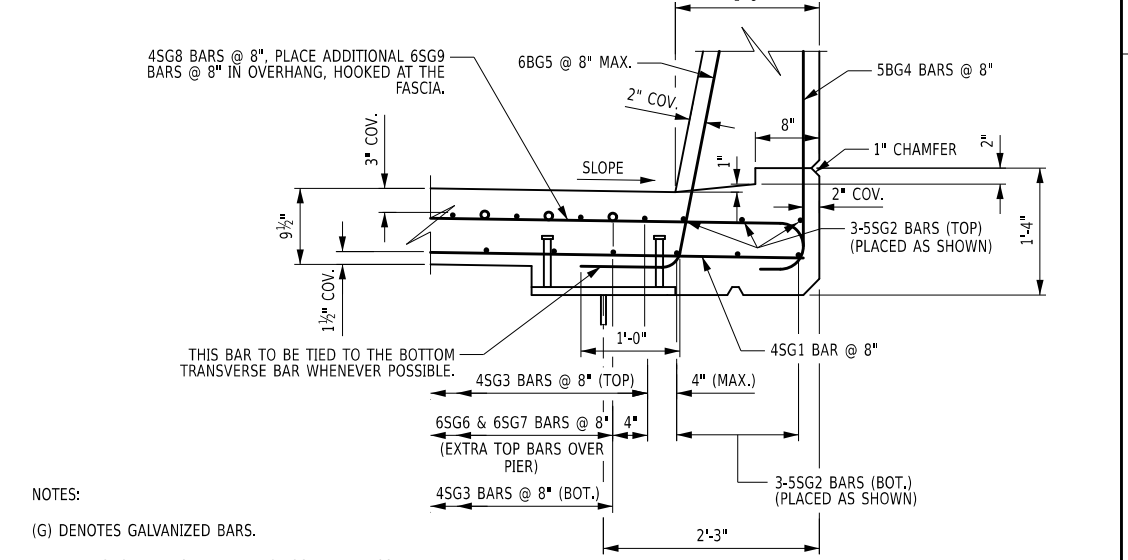
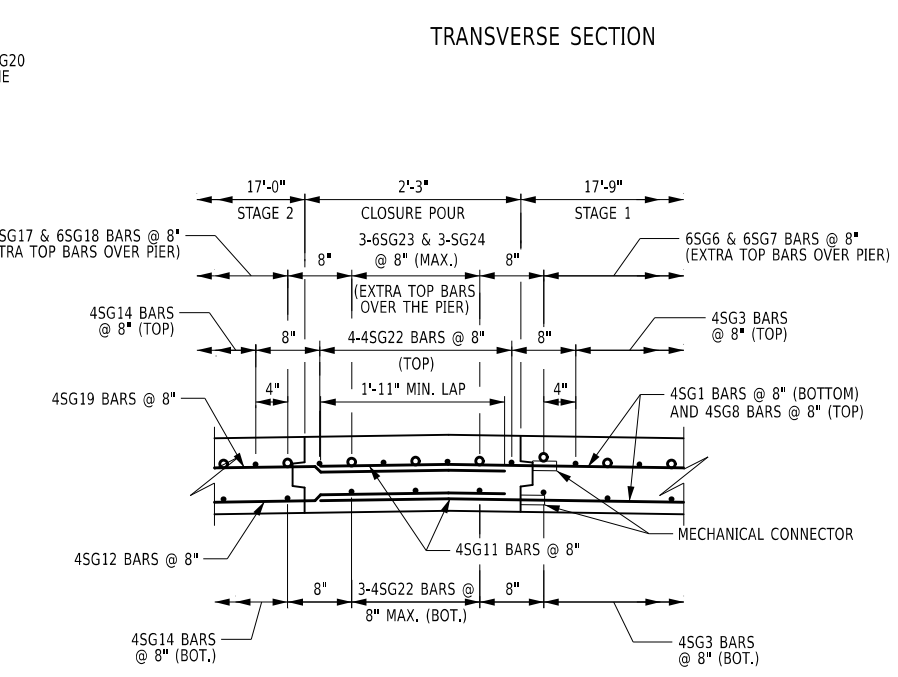
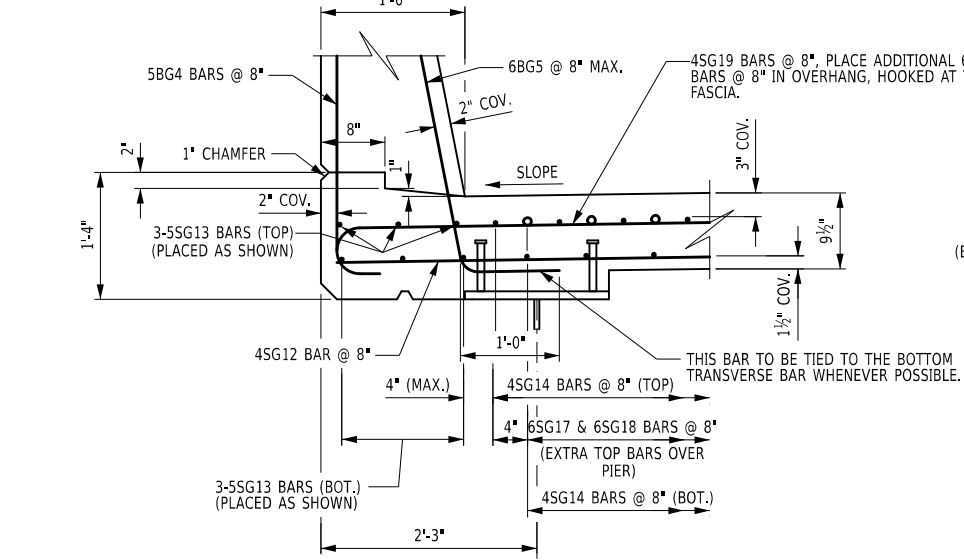
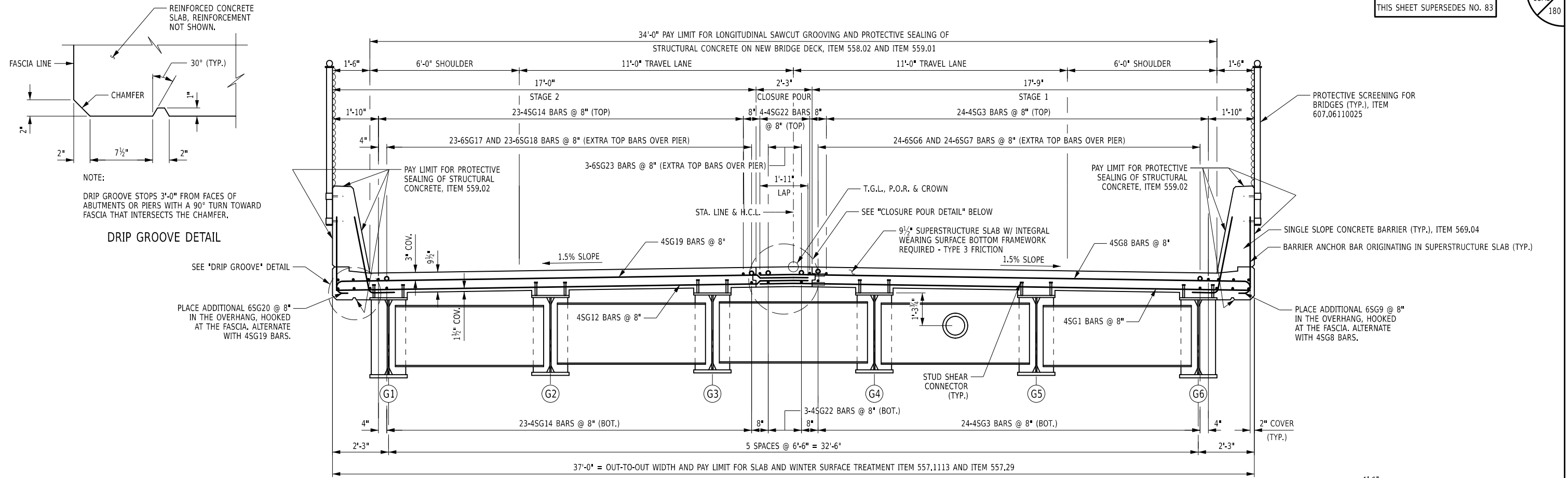
CHECKED BY: AJICE

DRAFTED BY: GWR

CHECKED BY: AJICE

DESIGNED BY: MR/VZ

DESIGN SUPERVISOR: RWL



NOTES:

(G) DENOTES GALVANIZED BARS.

ALL REINFORCEMENT SHALL HAVE 2" COVER UNLESS OTHERWISE NOTED.

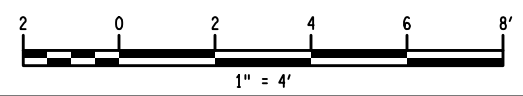
FOR FRAMING PLAN, SEE DRAWING NO. ST-44.

FOR DIAPHRAGM DETAILS, SEE DRAWING NO. ST-46.

FOR SINGLE SLOPE CONCRETE BARRIER DETAILS, SEE DRAWING NO. ST-57 AND ST-58.

FOR PROTECTIVE SCREENING DETAILS, SEE DRAWING ST-63.

(G#) - DENOTES GIRDER NUMBER.



IT IS A VIOLATION OF LAW FOR ANY PERSON, UNLESS THEY ARE ACTING UNDER THE DIRECTION OF A LICENSED PROFESSIONAL ENGINEER, ARCHITECT, LANDSCAPE ARCHITECT, OR LAND SURVEYOR, TO ALTER AN ITEM IN ANY WAY. IF AN ITEM BEARING THE STAMP OF A LICENSED PROFESSIONAL IS ALTERED, THE ALTERING ENGINEER, ARCHITECT, LANDSCAPE ARCHITECT, OR LAND SURVEYOR SHALL STAMP THE DOCUMENT AND INCLUDE THE NOTATION "ALTERED BY" FOLLOWED BY THEIR SIGNATURE, THE DATE OF SUCH ALTERATION, AND A SPECIFIC DESCRIPTION OF THE ALTERATION.

REVISIONS			
DATE	DESCRIPTION	BY	SYM.



TITLE OF PROJECT REPLACEMENT OF THE PINE HILL ROAD BRIDGE AT I-87 MILEPOST 47.58	CONTRACT NUMBER: TANY 26-17B
LOCATION OF PROJECT VILLAGE OF WOODBURY ORANGE COUNTY BIN 5514280	DATE: 01/19/2026
TITLE OF DRAWING TRANSVERSE SECTION	DRAWING NUMBER: ST-43

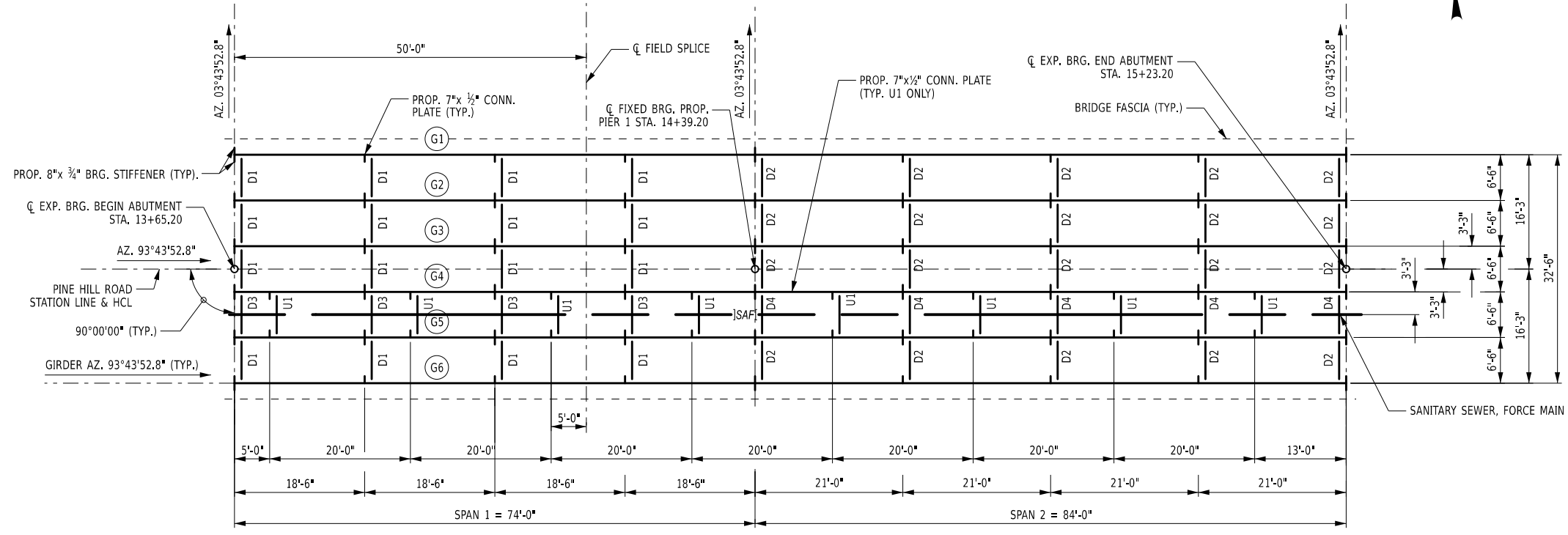
CHECKED BY: AJCE

DRAFTED BY: GWR

CHECKED BY: AJCE

DESIGNED BY: MR/VZ

DESIGN SUPERVISOR: RWL



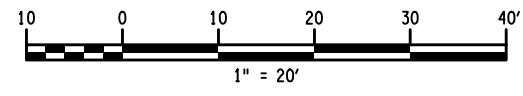
FRAMING PLAN

STRUCTURAL STEEL NOTES

1. CONNECTIONS SHALL BE MADE ACCORDING TO THE NEW YORK STATE STEEL CONSTRUCTION MANUAL.
2. UNLESS OTHERWISE INDICATED, BOLTED CONNECTIONS SHALL BE MADE WITH 7/8" DIA. ASTM F3125, GRADE A325 HIGH-STRENGTH BOLTS.
3. THE CONTRACTOR MAY PLACE DIAPHRAGMS ON EITHER SIDE OF THE BEARING STIFFENERS OR CONNECTION PLATES AS NECESSARY FOR CORRECT ALIGNMENT, PROVIDED THERE WILL BE NO INTERFERENCE WITH OTHER STRUCTURAL DETAILS.
4. TAPERED OR FLAT SHIM PLATES MAY BE USED IN THE CONNECTION BETWEEN SKEWED DIAPHRAGMS AND THE BEARING STIFFENERS, STIFFENER CONNECTION PLATES OR GUSSET PLATES. VARIABLE THICKNESSES OF SHIM PLATES MAY BE USED. THE MINIMUM THICKNESS OF SHIM PLATE SHALL BE 1/8" WITH A MAXIMUM NUMBER OF THREE SHIM PLATES PERMITTED AT ANY CONNECTION. THE TOTAL THICKNESS OF ALL SHIM PLATES USED AT ANY CONNECTION SHALL NOT EXCEED 1". SHIM PLATES SHALL HAVE THE DIMENSIONS OF THE FAYING SURFACE. THE SHIM MATERIAL SHALL CONFORM TO ASTM DESIGNATION A709(W) FOR WEATHERING STEEL APPLICATIONS. NO ADDITIONAL PAYMENT WILL BE MADE FOR FURNISHING AND PLACING THE SHIM PLATES.
5. DIAPHRAGM MEMBERS SHALL BE BLOCKED AS SHOWN, WITH THEIR FLANGE CUT BACK ON ONE SIDE, AND CHIPPED OR GROUND FLUSH. IN LIEU OF BLOCKING THE DIAPHRAGM MEMBER, THE FABRICATOR SHALL HAVE THE OPTION OF COPING THE FLANGE.

STRUCTURAL STEEL NOTES (CONT.)

6. FOR LONGITUDINAL JOINTS AT STAGE CONSTRUCTION LINES, ONLY ONE SIDE OF THE INTERMEDIATE DIAPHRAGMS UNDER THE JOINT SHALL BE CONNECTED WHEN ERECTED. AFTER ALL PORTIONS OF THE NEWER DECK HAVE BEEN POURED (INSTALLED FOR PRECAST DECK PANELS) AND SET TO THE SATISFACTION OF THE ENGINEER, THE OTHER SIDE OF THE DIAPHRAGMS SHALL BE CONNECTED AND THE CLOSURE JOINT PLACED.
7. ALL BOLT HEADS SHALL BE PLACED ON THE TOP SIDE OF CONNECTIONS UNLESS OTHERWISE NOTED.



ALTERED ON:	AFFIXED ON: 01/19/2026
SIGNATURE: STAMP:	SIGNATURE: EDWIN K. TWISS JR., PE STAMP:

IT IS A VIOLATION OF LAW FOR ANY PERSON, UNLESS THEY ARE ACTING UNDER THE DIRECTION OF A LICENSED PROFESSIONAL ENGINEER, ARCHITECT, LANDSCAPE ARCHITECT, OR LAND SURVEYOR, TO ALTER AN ITEM IN ANY WAY. IF AN ITEM BEARING THE STAMP OF A LICENSED PROFESSIONAL IS ALTERED, THE ALTERING ENGINEER, ARCHITECT, LANDSCAPE ARCHITECT, OR LAND SURVEYOR SHALL STAMP THE DOCUMENT AND INCLUDE THE NOTATION "ALTERED BY" FOLLOWED BY THEIR SIGNATURE, THE DATE OF SUCH ALTERATION, AND A SPECIFIC DESCRIPTION OF THE ALTERATION.

REVISIONS			
DATE	DESCRIPTION	BY	SYM.

 	TITLE OF PROJECT REPLACEMENT OF THE PINE HILL ROAD BRIDGE AT I-87 MILEPOST 47.58	CONTRACT NUMBER: TANY 26-17B
	LOCATION OF PROJECT VILLAGE OF WOODBURY ORANGE COUNTY BIN 5514280	DATE: 01/19/2026
TITLE OF DRAWING FRAMING PLAN		DRAWING NUMBER: ST-44

GRID NORTH



CHECKED BY: AJCE

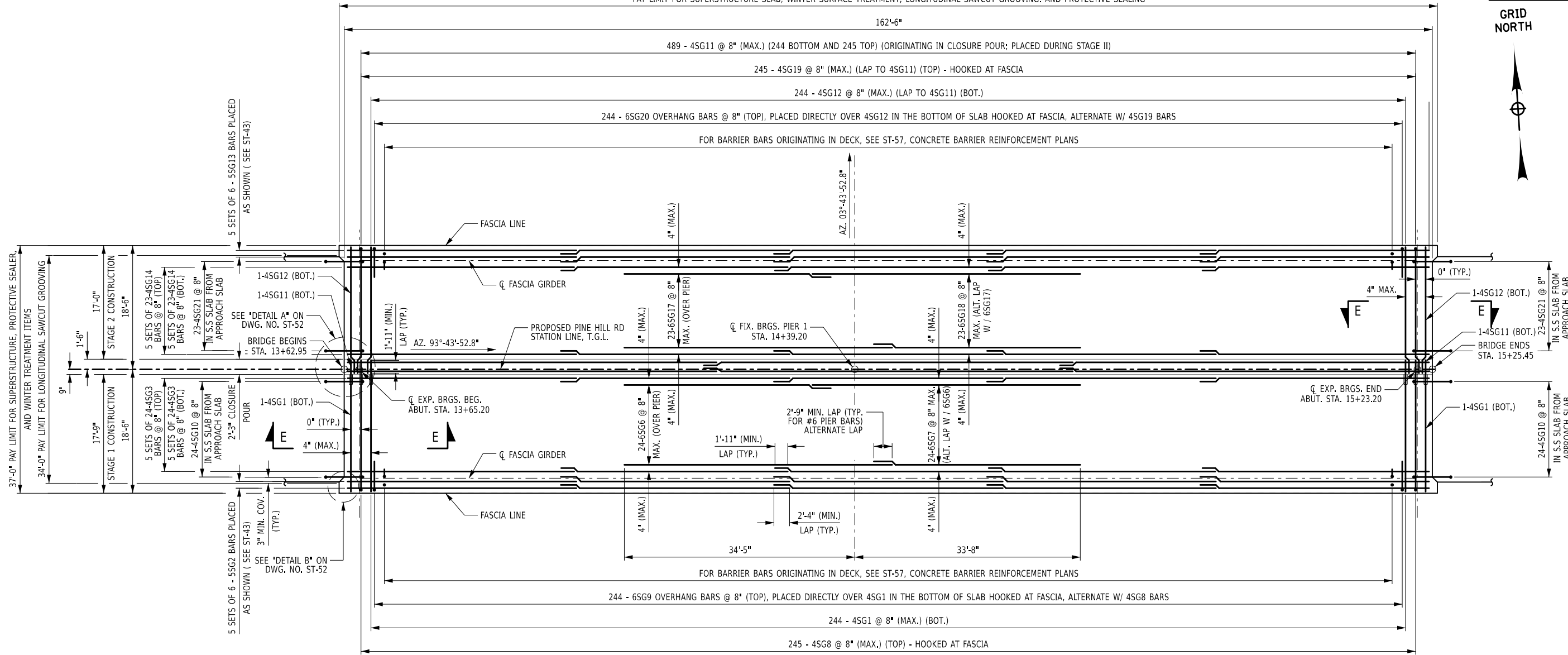
DRAFTED BY: GWR

CHECKED BY: AJCE

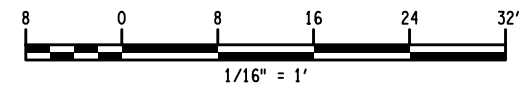
DESIGNED BY: MR/VZ

DESIGN SUPERVISOR: RWL

PAY LIMIT FOR SUPERSTRUCTURE SLAB, WINTER SURFACE TREATMENT, LONGITUDINAL SAWCUT GROOVING, AND PROTECTIVE SEALING



SUPERSTRUCTURE SLAB REINFORCEMENT PLAN



SUPERSTRUCTURE SLAB TABLE					
PLACEMENT	SUPERSTRUCTURE SLAB (SY) ITEM 557.1113	WINTER SURFACE TREATMENT (SY) ITEM 557.29	LONGITUDINAL SAWCUT GROOVING (SY) ITEM 558.02	PROTECTIVE SEALING OF NEW DECKS (SF) ITEM 559.01	PROTECTIVE SEALING OF STRUCTURAL CONCRETE (SF) ITEM 559.02
STAGE 1	320.9	320.9	293	2641	1719
STAGE 2	307.4	307.4	280	2519	1719
CLOSURE POUR	40.7	40.7	41	366	--
TOTAL	669.0	669.0	614	5526	3438

** FOR TRANSVERSE LIMITS OF LONGITUDINAL SAWCUT GROOVING AND PROTECTIVE SEALING ITEMS, REFER TO THE TRANSVERSE SECTION DRAWING.

NOTES:
FOR "DETAIL A" AND "DETAIL B", SEE DRAWING NO. ST-52.
SEE DRAWING NO. ST-53 FOR SECTION E-E.
ALL REINFORCEMENT SHALL HAVE 2" COVER UNLESS OTHERWISE NOTED.
(G) DENOTES GALVANIZED REINFORCEMENT

ALTERED ON: _____ AFFIXED ON: 01/19/2026

SIGNATURE: _____ STAMP: _____
SIGNATURE: EDWIN K. TWISS JR., PE STAMP: _____

IT IS A VIOLATION OF LAW FOR ANY PERSON, UNLESS THEY ARE ACTING UNDER THE DIRECTION OF A LICENSED PROFESSIONAL ENGINEER, ARCHITECT, LANDSCAPE ARCHITECT, OR LAND SURVEYOR, TO ALTER AN ITEM IN ANY WAY. IF AN ITEM BEARING THE STAMP OF A LICENSED PROFESSIONAL IS ALTERED, THE ALTERING ENGINEER, ARCHITECT, LANDSCAPE ARCHITECT, OR LAND SURVEYOR SHALL STAMP THE DOCUMENT AND INCLUDE THE NOTATION "ALTERED BY" FOLLOWED BY THEIR SIGNATURE, THE DATE OF SUCH ALTERATION, AND A SPECIFIC DESCRIPTION OF THE ALTERATION.

REVISIONS			
DATE	DESCRIPTION	BY	SYM.



TITLE OF PROJECT REPLACEMENT OF THE PINE HILL ROAD BRIDGE AT I-87 MILEPOST 47.58	CONTRACT NUMBER: TANY 26-17B
LOCATION OF PROJECT VILLAGE OF WOODBURY ORANGE COUNTY BIN 5514280	DATE: 01/19/2026
TITLE OF DRAWING SLAB REINFORCEMENT DETAILS (1 OF 2)	DRAWING NUMBER: ST-51

